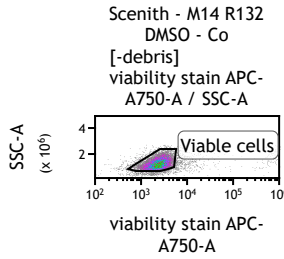
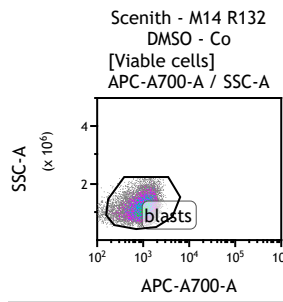


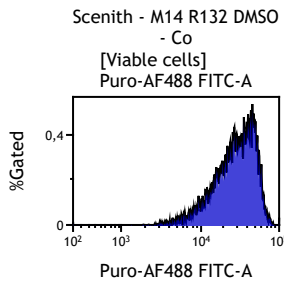
| Gate    | %Gated |
|---------|--------|
| All     | 100,0  |
| -debris | 92,4   |



| Gate         | %Gated |
|--------------|--------|
| All          | 100,0  |
| Viable cells | 89,6   |



| Gate   | %Gated |
|--------|--------|
| All    | 100,0  |
| blasts | 93,4   |

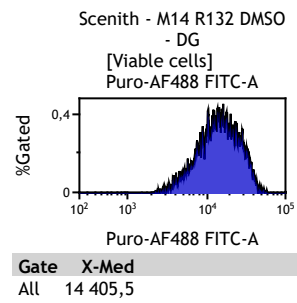
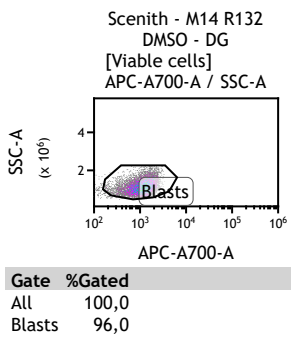
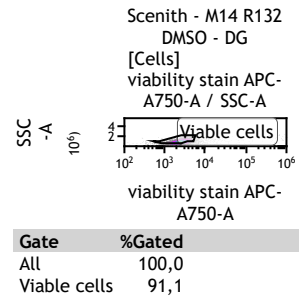
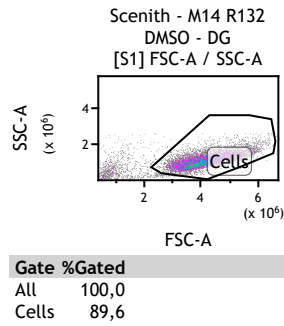
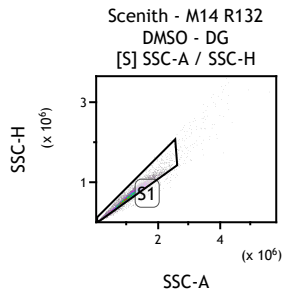
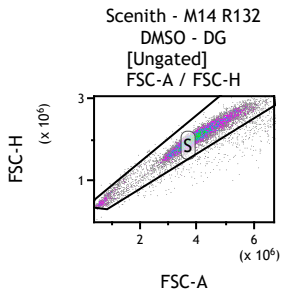


| Gate | X-Med    |
|------|----------|
| All  | 29 372,7 |

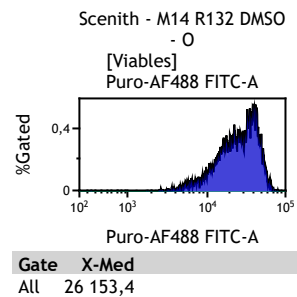
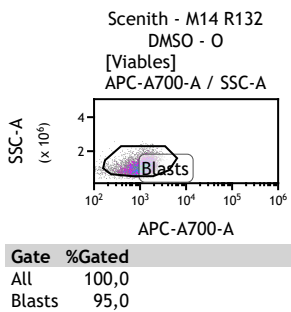
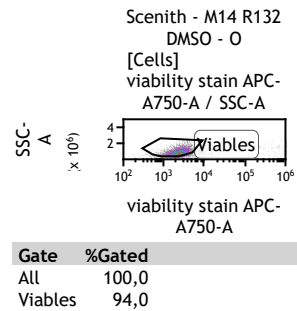
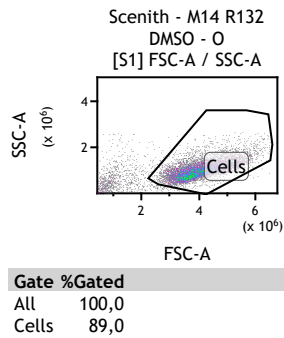
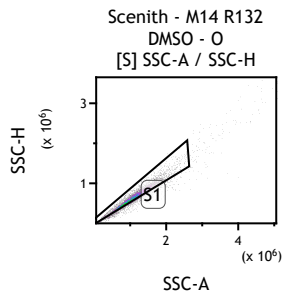
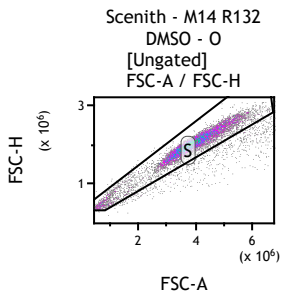
Scenith - M14 R132 DMSO - Co

| Gate         | Number | "FL1-A"-Med-Logicle |
|--------------|--------|---------------------|
| All          | 15 000 | 26877,7             |
| S            | 13 918 | 26583,1             |
| S1           | 13 327 | 26846,8             |
| -debris      | 12 318 | 28630,1             |
| Viable cells | 11 031 | 29372,7             |
| blasts       | 10 304 | 29949,6             |

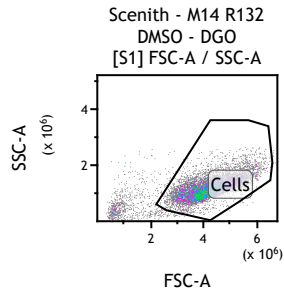
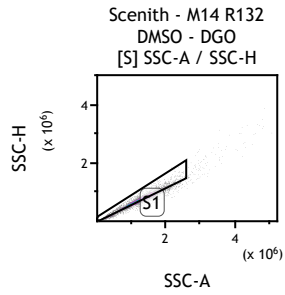
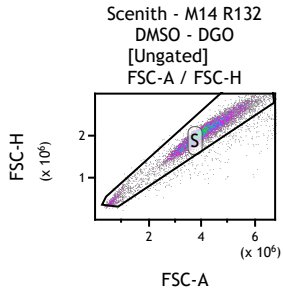
## 2-DG



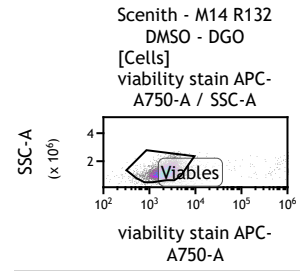
## Oligo



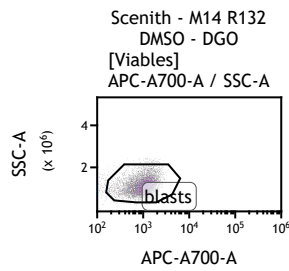
## DGO



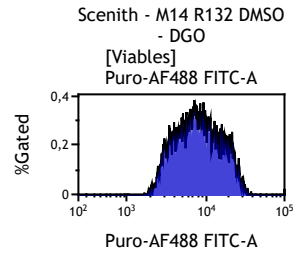
| Gate  | %Gated |
|-------|--------|
| All   | 100,0  |
| Cells | 90,4   |



| Gate     | %Gated |
|----------|--------|
| All      | 100,0  |
| Viabiles | 94,8   |

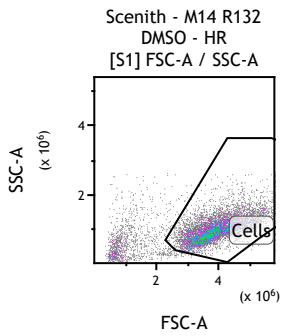
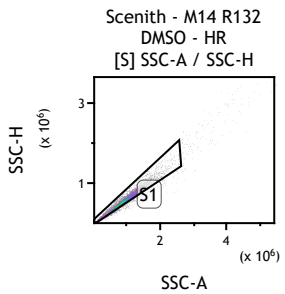
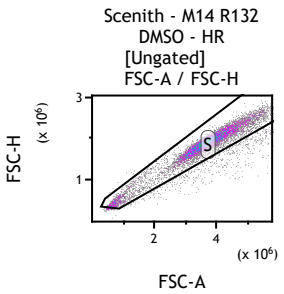


| Gate   | %Gated |
|--------|--------|
| All    | 100,0  |
| blasts | 92,4   |

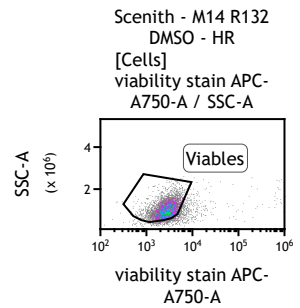


| Gate | X-Med   |
|------|---------|
| All  | 7 862,1 |

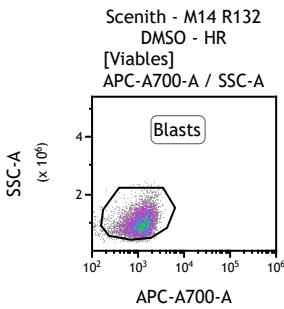
## Hr



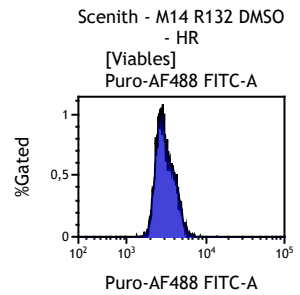
| Gate  | %Gated |
|-------|--------|
| All   | 100,0  |
| Cells | 84,5   |



| Gate     | %Gated |
|----------|--------|
| All      | 100,0  |
| Viabiles | 92,7   |



| Gate   | %Gated |
|--------|--------|
| All    | 100,0  |
| Blasts | 96,1   |

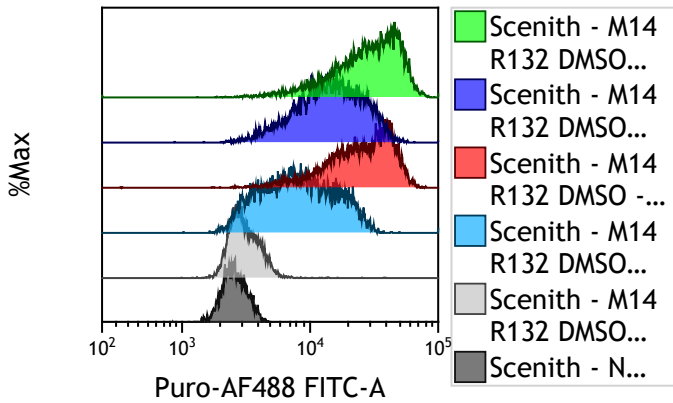


| Gate | X-Med   |
|------|---------|
| All  | 2 982,2 |

Median a-Puro AF488 - blasts

|                   |          |
|-------------------|----------|
| Median blasts Co  | 29 949,6 |
| Median blasts DG  | 14 510,0 |
| Median blasts O   | 26 518,2 |
| Median blasts DGO | 7 918,8  |
| Median blasts Hr  | 2 997,8  |
| Median NM         | 2 609,1  |

Gated in blasts



In blasts total

|  |          |
|--|----------|
| Noise [Hr-NM]                                      | 388,7    |
| Traduction linked signal [Co-Hr]                   | 26 951,9 |
| Metabolic linked signal [Co-DGO]                   | 22 030,9 |
| DEPENDENCY   |          |
| glucose dependancy (%) [(Co-DG)*100/(Co-DGO)]      | 70,1     |
| FAO/AAO capacity (%)                               | 29,9     |
| Mitochondrial dependancy (%) [(Co-O)*100/(Co-DGO)] | 15,6     |
| glycolytic capacity (%)                            | 84,4     |

In CD34+CD38-

|  |     |
|--|-----|
| Noise [Hr-NM]                                      | ### |
| Traduction linked signal [Co-Hr]                   | ### |
| Metabolic linked signal [Co-DGO]                   | ### |
| DEPENDENCY   |     |
| glucose dependancy (%) [(Co-DG)*100/(Co-DGO)]      | ### |
| FAO/AAO capacity (%)                               | ### |
| Mitochondrial dependancy (%) [(Co-O)*100/(Co-DGO)] | ### |
| glycolytic capacity (%)                            | ### |

In CD39+ blasts

|  |     |
|--|-----|
| Noise [Hr-NM]                                      | ### |
| Traduction linked signal [Co-Hr]                   | ### |
| Metabolic linked signal [Co-DGO]                   | ### |
| DEPENDENCY   |     |
| glucose dependancy (%) [(Co-DG)*100/(Co-DGO)]      | ### |
| FAO/AAO capacity (%)                               | ### |
| Mitochondrial dependancy (%) [(Co-O)*100/(Co-DGO)] | ### |
| glycolytic capacity (%)                            | ### |