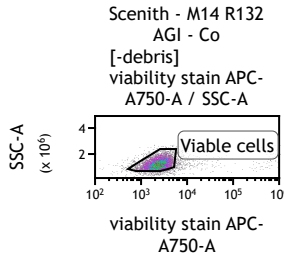
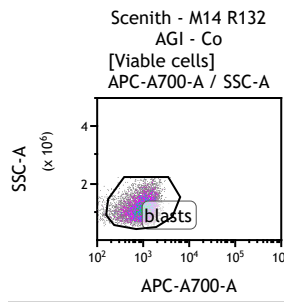


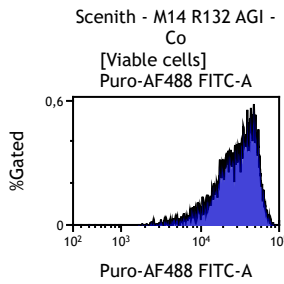
| Gate | %Gated |
|---------|--------|
| All | 100,0 |
| -debris | 90,7 |



| Gate | %Gated |
|--------------|--------|
| All | 100,0 |
| Viable cells | 89,2 |



| Gate | %Gated |
|--------|--------|
| All | 100,0 |
| blasts | 93,8 |

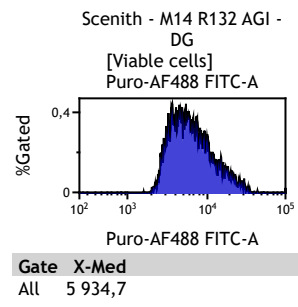
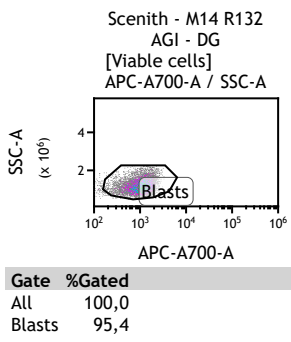
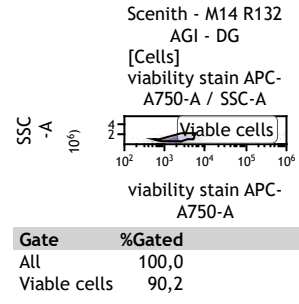
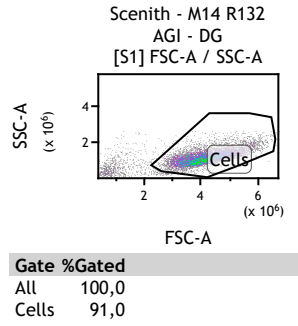
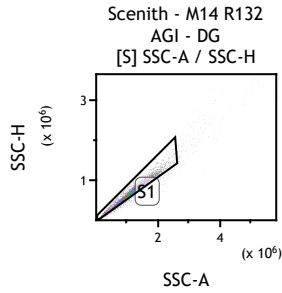
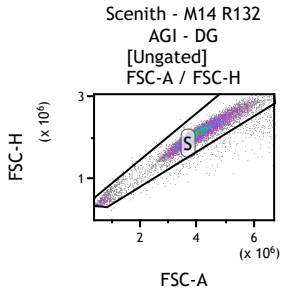


| Gate | X-Med |
|------|----------|
| All | 30 793,4 |

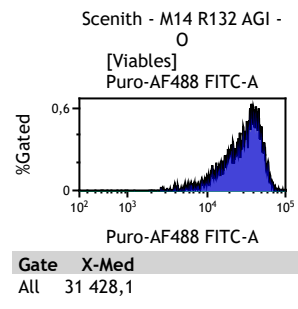
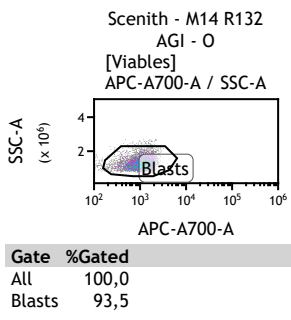
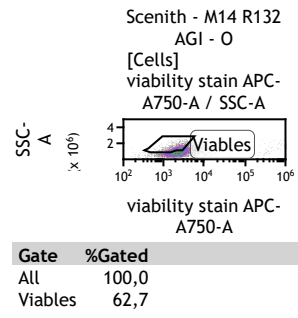
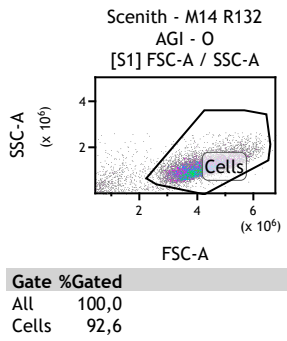
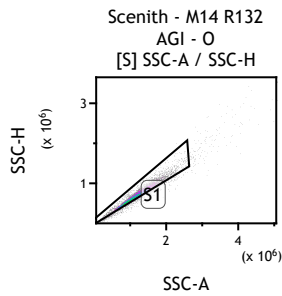
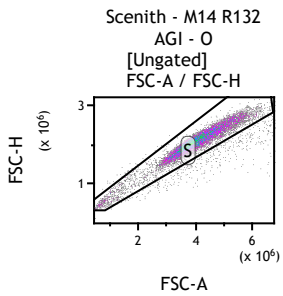
Scenith - M14 R132 AGI - Co

| Gate | Number | "FL1-A"-Med-Logicle |
|--------------|--------|---------------------|
| All | 10 000 | 27902,4 |
| S | 9 206 | 27349,7 |
| S1 | 8 784 | 27580,3 |
| -debris | 7 971 | 30042,8 |
| Viable cells | 7 108 | 30793,4 |
| blasts | 6 665 | 31293,3 |

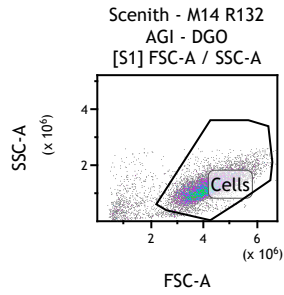
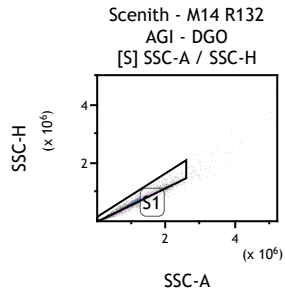
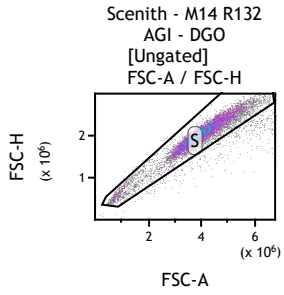
2-DG



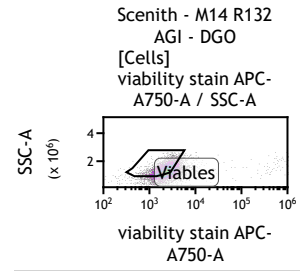
Oligo



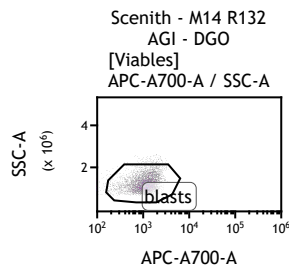
DGO



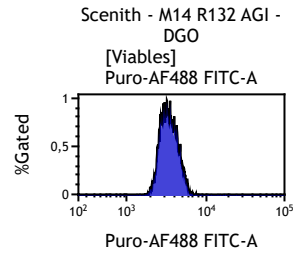
| Gate | %Gated |
|-------|--------|
| All | 100,0 |
| Cells | 90,1 |



| Gate | %Gated |
|----------|--------|
| All | 100,0 |
| Viabiles | 66,0 |

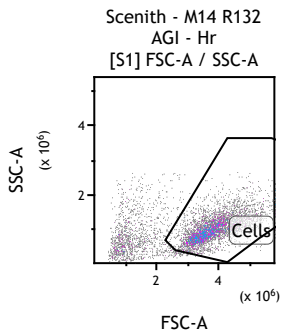
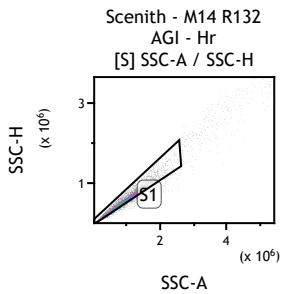
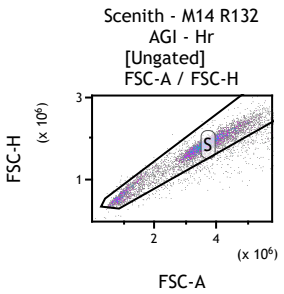


| Gate | %Gated |
|--------|--------|
| All | 100,0 |
| blasts | 94,2 |

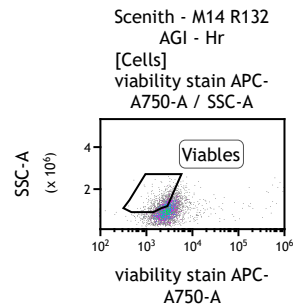


| Gate | X-Med |
|------|---------|
| All | 3 394,2 |

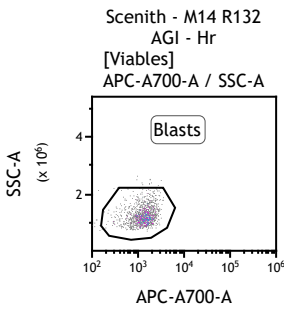
Hr



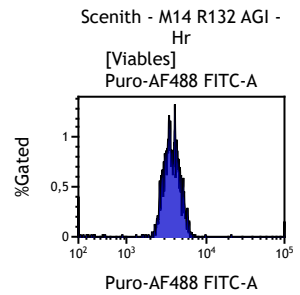
| Gate | %Gated |
|-------|--------|
| All | 100,0 |
| Cells | 74,6 |



| Gate | %Gated |
|----------|--------|
| All | 100,0 |
| Viabiles | 32,4 |



| Gate | %Gated |
|--------|--------|
| All | 100,0 |
| Blasts | 96,9 |

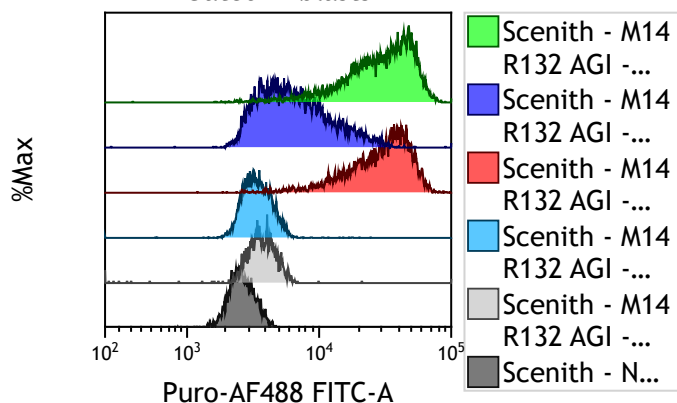


| Gate | X-Med |
|------|---------|
| All | 3 697,7 |

Median a-Puro AF488 - blasts

| | |
|-------------------|----------|
| Median blasts Co | 31 293,3 |
| Median blasts DG | 5 986,8 |
| Median blasts O | 31 789,6 |
| Median blasts DGO | 3 389,1 |
| Median blasts Hr | 3 700,3 |
| Median NM | 2 622,8 |

Gated in blasts



In blasts total

| | |
|--|----------|
| Noise [Hr-NM] | 1 077,5 |
| Traduction linked signal [Co-Hr] | 27 593,0 |
| Metabolic linked signal [Co-DGO] | 27 904,3 |
| DEPENDENCY | |
| glucose dependency (%) [(Co-DG)*100/(Co-DGO)] | 90,7 |
| FAO/AAO capacity (%) | 9,3 |
| Mitochondrial dependency (%) [(Co-O)*100/(Co-DGO)] | -1,8 |
| glycolytic capacity (%) | 101,8 |

In CD34+CD38-

| | |
|--|-----|
| Noise [Hr-NM] | ### |
| Traduction linked signal [Co-Hr] | ### |
| Metabolic linked signal [Co-DGO] | ### |
| DEPENDENCY | |
| glucose dependancy (%) $[(Co-DG)*100/(Co-DGO)]$ | ### |
| FAO/AAO capacity (%) | ### |
| Mitochondrial dependancy (%) $[(Co-O)*100/(Co-DGO)]$ | ### |
| glycolytic capacity (%) | ### |

In CD39+ blasts

| | |
|--|-----|
| Noise [Hr-NM] | ### |
| Traduction linked signal [Co-Hr] | ### |
| Metabolic linked signal [Co-DGO] | ### |
| DEPENDENCY | |
| glucose dependancy (%) $[(Co-DG)*100/(Co-DGO)]$ | ### |
| FAO/AAO capacity (%) | ### |
| Mitochondrial dependancy (%) $[(Co-O)*100/(Co-DGO)]$ | ### |
| glycolytic capacity (%) | ### |